

# Technical Bulletin

Bulletin Number: 334 Revision Number: R-05

Release Date: October 23, 1987 Revision Date: June 1, 2000

**SUBJECT:** LOCK HASP AND LOCK LATCH/LOCK STRIKE FOR MAIN DOOR

**MODELS AFFECTED:** All Dixie-Narco Venders.

**REASON:** To provide kits which give added security to the main door.

**PARTS NEEDED:**

Bottom Door Lock Hasp Kit Order (for installation, see pages 4 and 5):

1 - 592,050,00x.x4 Bottom Door Lock Hasp Kit (fit Pepsi MC, Generic Round, 7UP B7, Display)

Kit Contents:

1 - 592,051,16x.x3	Hasp Bracket
1 - 801,305,64x.x1	Steel Hasp
1 - 592,051,17x.x3	Latch Hasp
1 - 900,801,02x.x1	Hex Nut, 5/16-18
1 - 800,303,20x.x1	Hex Bolt 5/16-18x3
6 - 900,201,56x.x1	Carriage Bolt 14-20x3/4
6 - 900,800,67x.x1	Keps Nut 1/4-20
1 - 900,301,55x.x1	Screw, #8-32x1/2

Bottom of Main Door Order (for installation, see page 2):

1 - 000,005,23x.x6	Lock Latch, Bottom
1 - 000,005,24x.x6	Lock Strike, Bottom
2 - 900,201,45x.x1	Carriage Bolts 1/4"-20 x 1/2"
2 - 900,800,67x.x1	Nut, 1/4-20

Top of Main Door Order (for installation, see page 3):

1 - 432,016,70x.x4 79" Vender Top Door Lock Kit

Kit Contents:

1 - 432,010,95x.x3	79" Vender Lock Strike, Top
1 - 432,010,93x.x3	79" Vender Lock Plate, Top
5 - 901,100,43x.x1	Drive Rivet
2 - 900,201,17x.x1	Carriage Bolt 1/4-20x1

1 - 432,016,60x.x4 Top Door Lock Kit (All models under 79")

Kit Contents:

1 - 432,010,94x.x3	Vender Lock Strike, Top
1 - 432,010,93x.x3	Vender Lock Plate, Top
5 - 901,100,43x.x1	Drive Rivet
2 - 900,201,17x.x1	Carriage Bolt 1/4-20x1

## BOTTOM LOCK LATCH/LOCK STRIKE INSTALLATION:

1. With the main door open, remove the two carriage bolts and nuts at the bottom of the door's vandal panel.
2. Note that the lock latch is shaped like the vandal panel on the main door. (See figure 1 below.)
3. Align the two square holes at the top of the lock latch with the two holes from which you removed the carriage bolts in step 1. (See figure 2 below.)
4. Secure the lock latch by installing the two carriage bolts and nuts removed in step one.
5. Tighten nuts securely.
6. With the lock latch in place, close the main door, and turn the T-handle until the door is in its normally closed and locked position.
7. With the door closed, slide the long leg of the lock strike behind the lock latch, at the same time align the  $\frac{1}{2}$ " diameter hole in the lock latch with the square hole in the lock strike. (See figures 1 & 3 below.)
8. Leave at least  $\frac{1}{8}$ " of space between the lock latch and the lock strike. (See figure 5 below.)
9. While holding the lock strike in position, use the two square holes in the lock strike as a template and mark the holes. (See figure 4 below.)
10. Drill two  $\frac{1}{4}$ " diameter holes.
11. Secure the lock strike by installing the two carriage bolts and nuts provided in the kit.
12. With the door in its closed and locked position, the  $\frac{1}{2}$ " diameter holes in the lock strike and lock latch should line up so a lock can be installed.

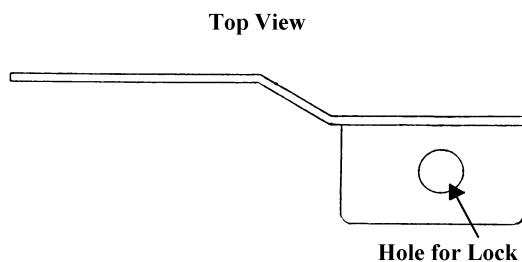


Figure 1  
Lock Latch

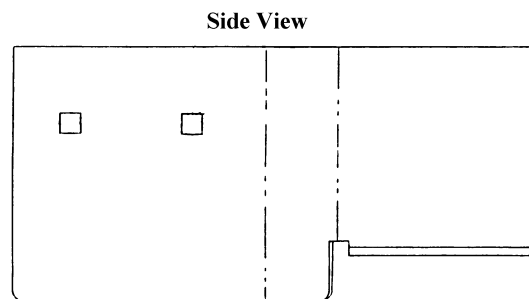


Figure 2  
Lock Latch

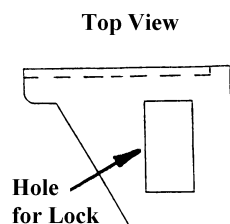


Figure 3  
Lock Strike

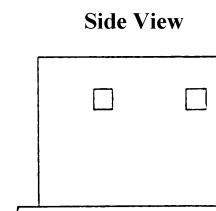


Figure 4  
Lock Strike

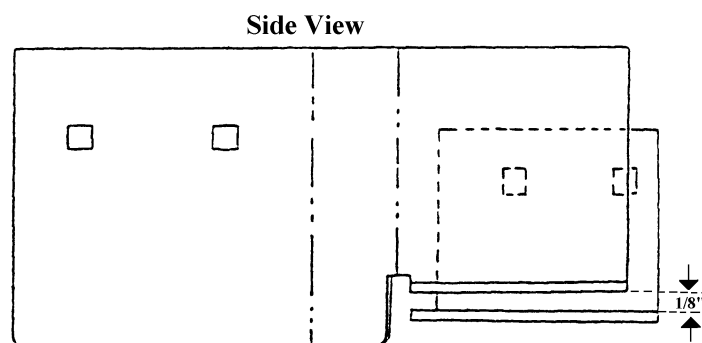


Figure 5  
Lock Latch/Lock Strike Mounted

## TOP LOCK PLATE/LOCK STRIKE INSTALLATION:

1. With the main door open, remove the two carriage bolts and nuts at the top of the door's vandal panel.
2. Note that the door lock plate is shaped like the vandal panel on the main door. (See figure 6 below.)
3. Align the two square holes of the door lock plate with the two holes from which you removed the carriage bolts in step one.
4. Secure the door lock plate by installing the two carriage bolts and nuts removed in step 1.
5. Tighten the nuts securely.
6. With the door lock plate in place, close the main door and turn the T-handle until the door is in its normally closed and locked position.
7. With the door closed, slide the long leg of the door lock strike behind the door lock plate. At the same time, align the  $\frac{1}{2}$ " diameter hole in the door lock plate with the  $\frac{1}{2}$ " diameter hole in the door lock strike. (See figures 6, 7, & 8 below.)
8. There should be approximately  $\frac{1}{8}$ " of space between the door lock plate and the door lock strike. (See figure 9 below.)
9. While holding the door lock strike in position, use the five holes in the door lock strike as a template and mark the holes. (See figure 9 below.)
10. Drill five  $\frac{1}{4}$ " diameter holes, only drilling through the outer cabinet wall of the vender.
11. Secure the door lock strike by installing the five drive rivets provided in the kit.
12. With the door in its closed and locked position, the  $\frac{1}{2}$ " diameter holes in the door lock plate and door lock strike should line up so a lock can be installed.

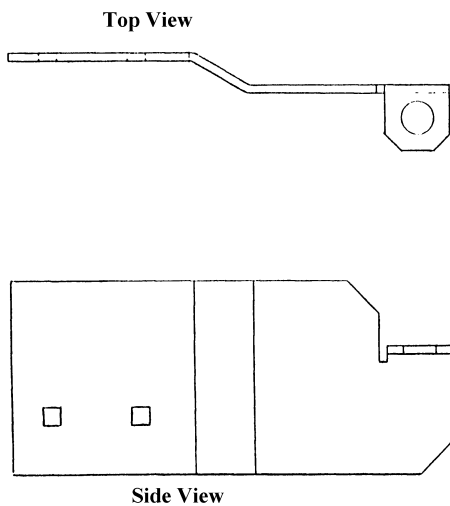


Figure 6  
Door Lock Plate  
432,010,93x.x3

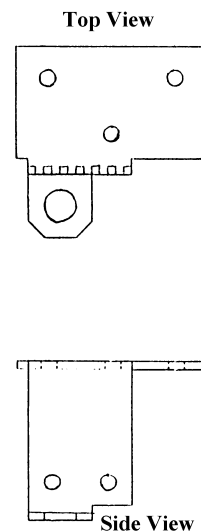


Figure 7  
79" Door Lock Strike  
432,010,95x.x3

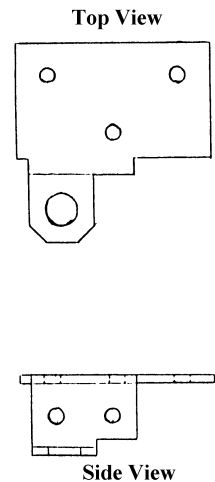


Figure 8  
Door Lock Strike  
432,010,94x.x3

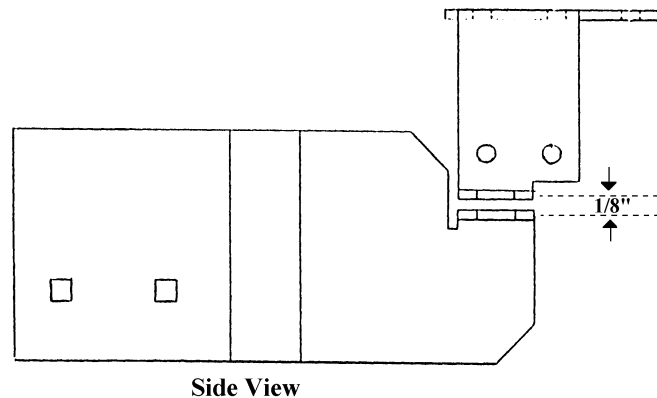


Figure 9  
Door Lock Plate / Door Lock Strike Mounted

## BOTTOM DOOR LOCK HASP INSTALLATION:

Fits - Pepsi Magnum Circular, Generic Round, 7UP B7, Display

1. Open the main door.
2. Assemble the hasp bracket (A, Figure 10) and the steel hasp (B, figure 10) using the 5/16-18 hex bolt (D, figure 10). DO NOT INSTALL HEX NUT AT THIS TIME.
3. Place the assembly on the base of the vender next to the door roller as shown in figure 2. Ensure there is no interference with the roller and that there is enough clearance on the right side (near the cabinet flange) to install the hex nut. Make sure the bottom of the bracket rests on the base plate.
4. Hold the assembly in position, use the two square holes in the bracket as a template and mark the holes.
5. Remove the assembly and take it apart.
6. Remove the bracket and drill the two square holes with a 1/4 " drill bit.
7. Remove the cabinet front stiffener plate.
8. Secure the bracket using two carriage bolts and nuts.
9. Using a 9/32" drill bit, drill a small hole in the base of the vender using the small circular hole in the bracket as a template.
10. Secure with #8-32x½ screw supplied in the kit.
11. Install the cabinet front stiffener plate removed in step 7.
12. Assemble the steel hasp to the hasp bracket and secure with 5/16-18 hex bolt and nut.
13. Lay the steel hasp in horizontal position and close the door.
14. Place the latch hasp on front of the vender so the large round hole in it and in the steel hasp on the bracket assembly align. See figure 12 on page 5.
15. Use the latch hasp as a template and mark the four square mounting holes.
16. Remove the bracket and drill the four square holes with a ¼" drill bit.
17. Secure the bracket using four carriage bolts and nuts.
18. Install a lock to secure. Use American Lock Company Series 2000 Lock or one similar. See figure 13 on page 5.

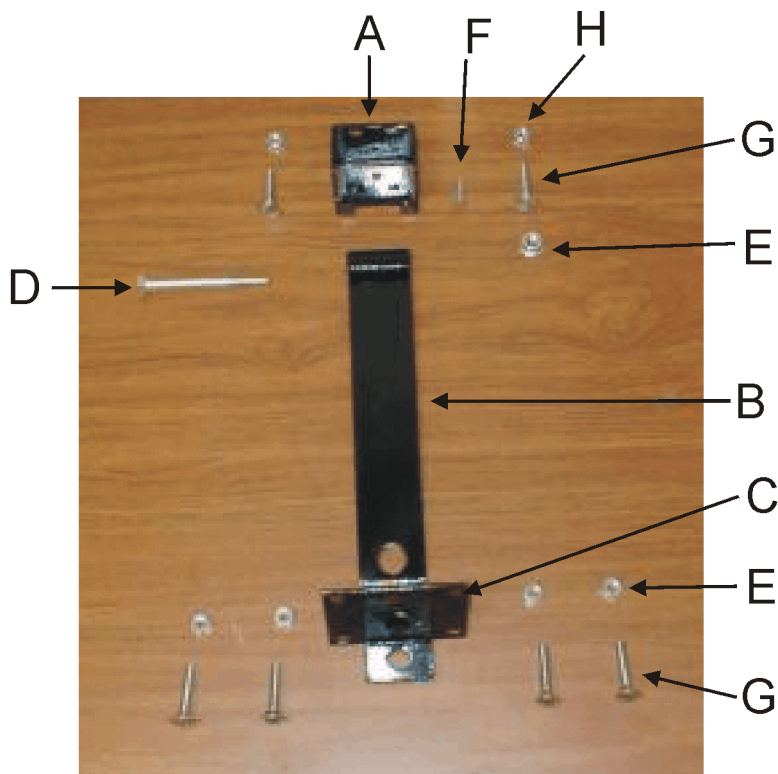


Figure 10



Figure 11



Figure 12

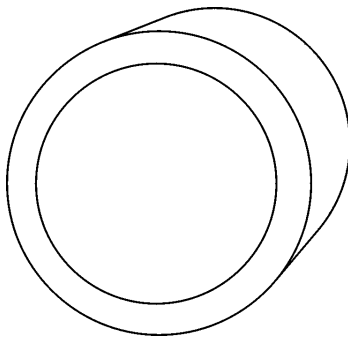


Figure 13